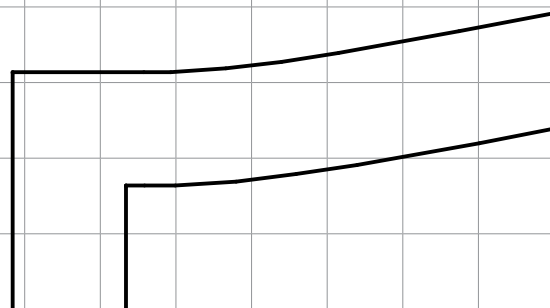
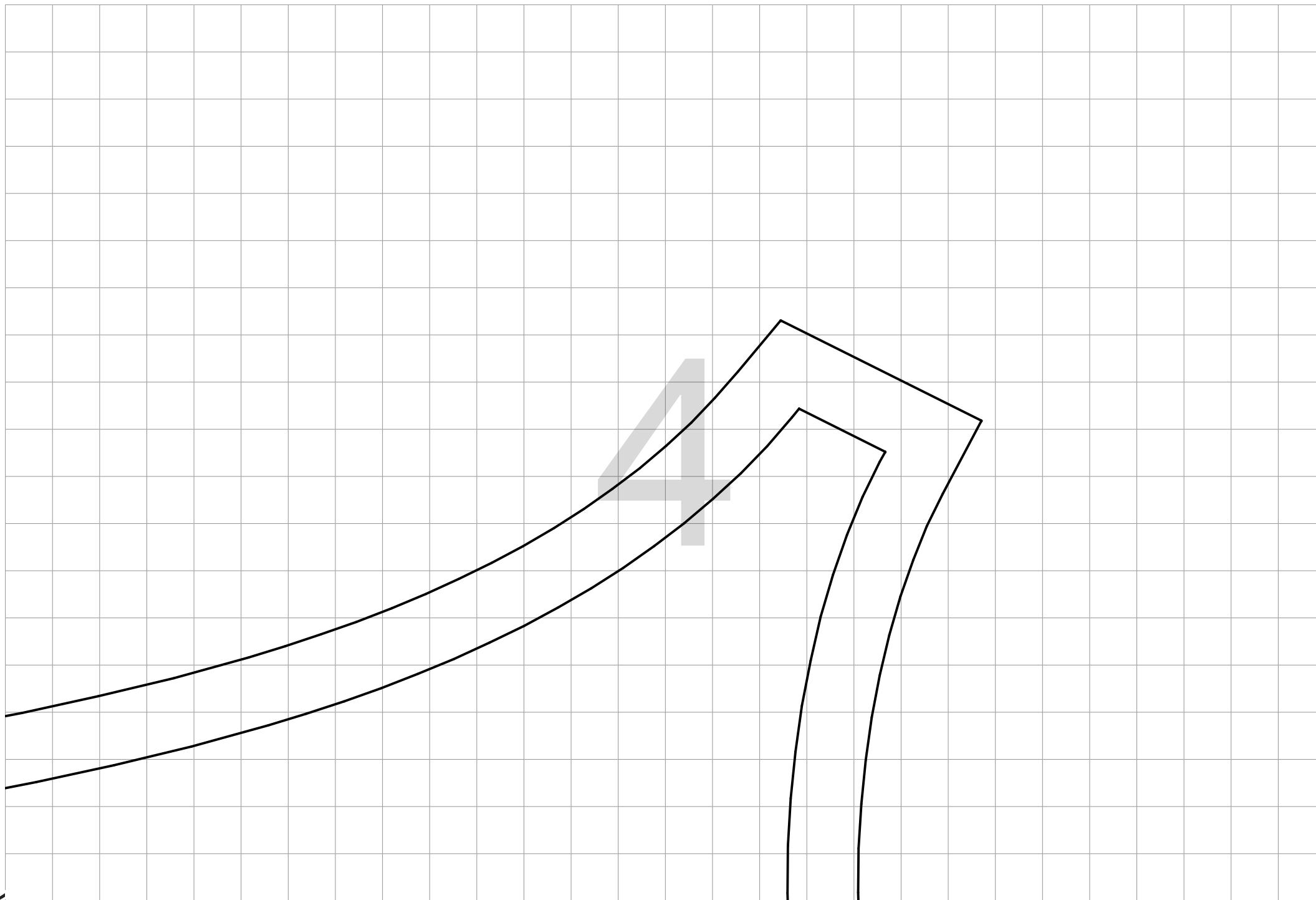


3





HM Bruch

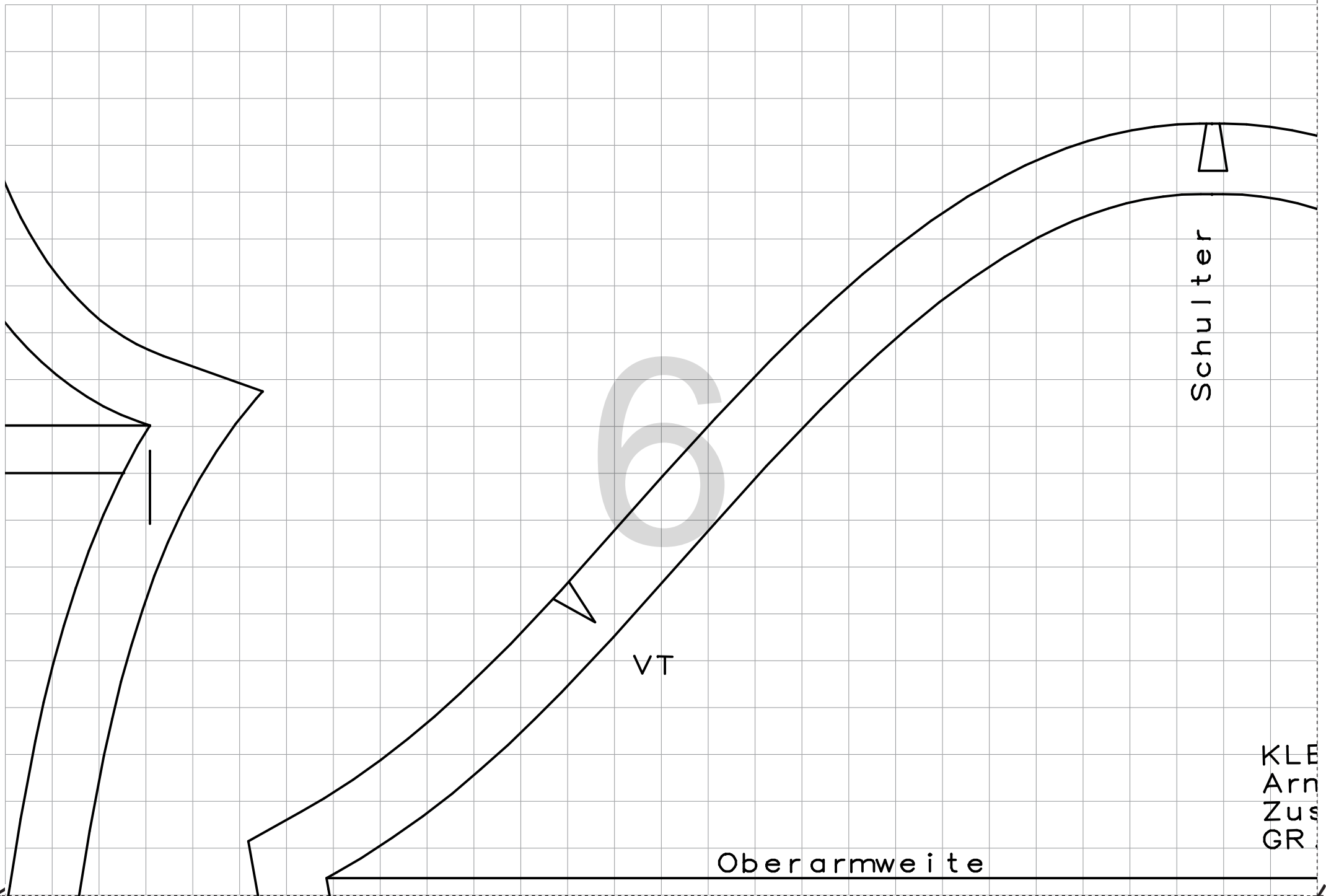
FDL

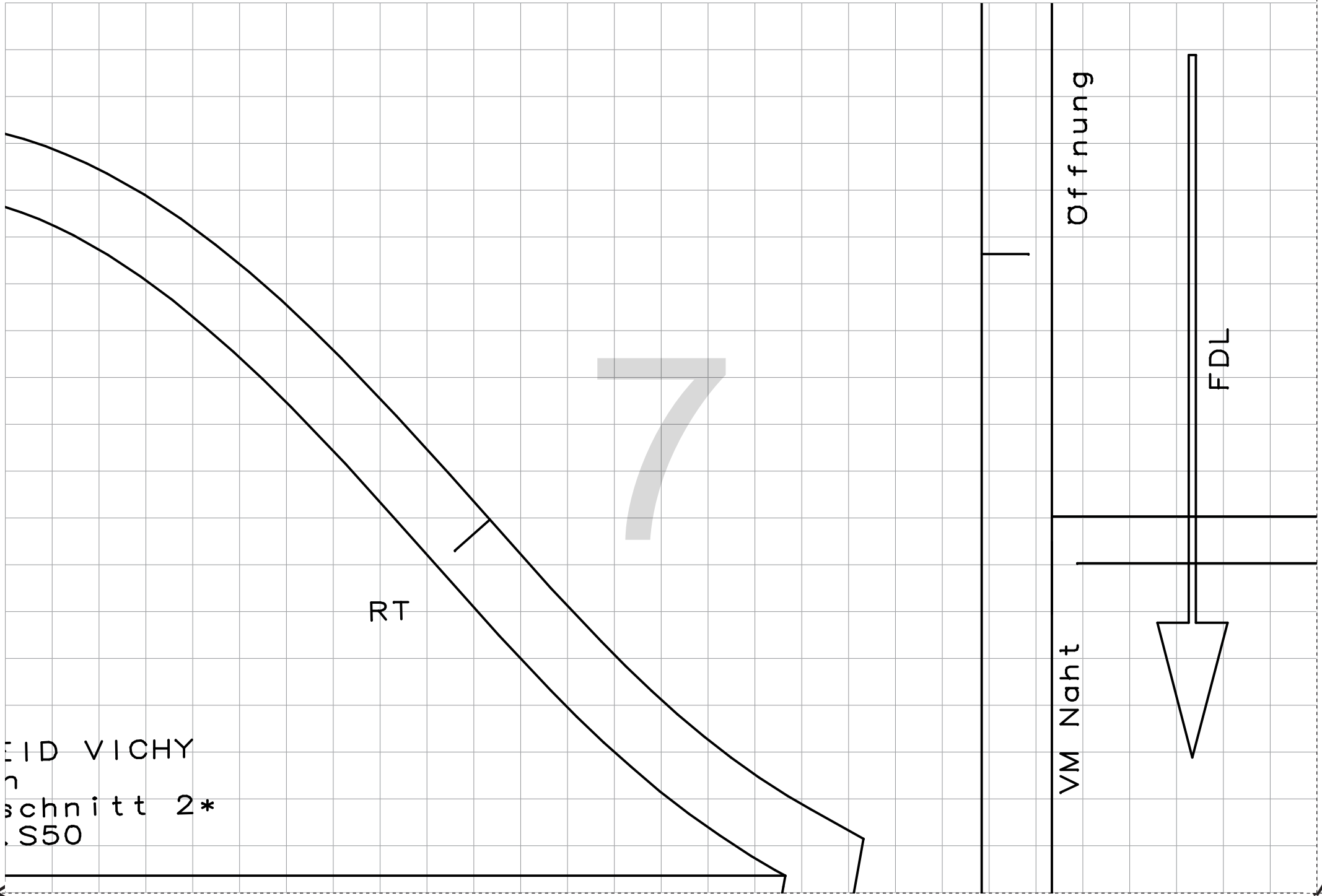
KLEID VICHY  
Rückteil oben  
Zuschnitt 1\*  
GR.S50

Arm

Oberweite

286.2 mm





KLEID VICHY  
Vorderteil oben  
Zuschnitt 2\*  
GR.S50

Arm

Oberweite

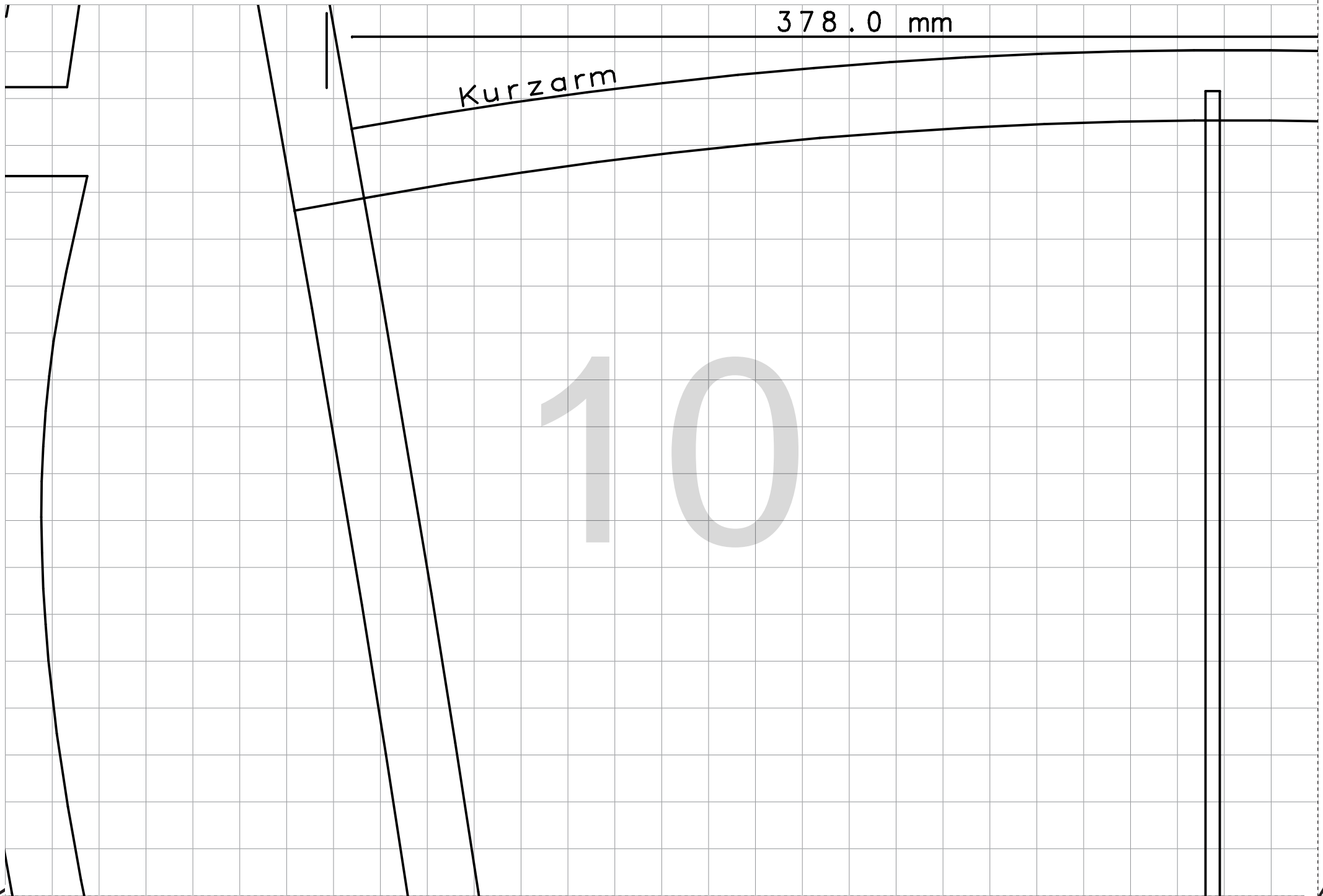
283.0 mm

1.5cm Nahtzugabe

Taille

250.0 mm

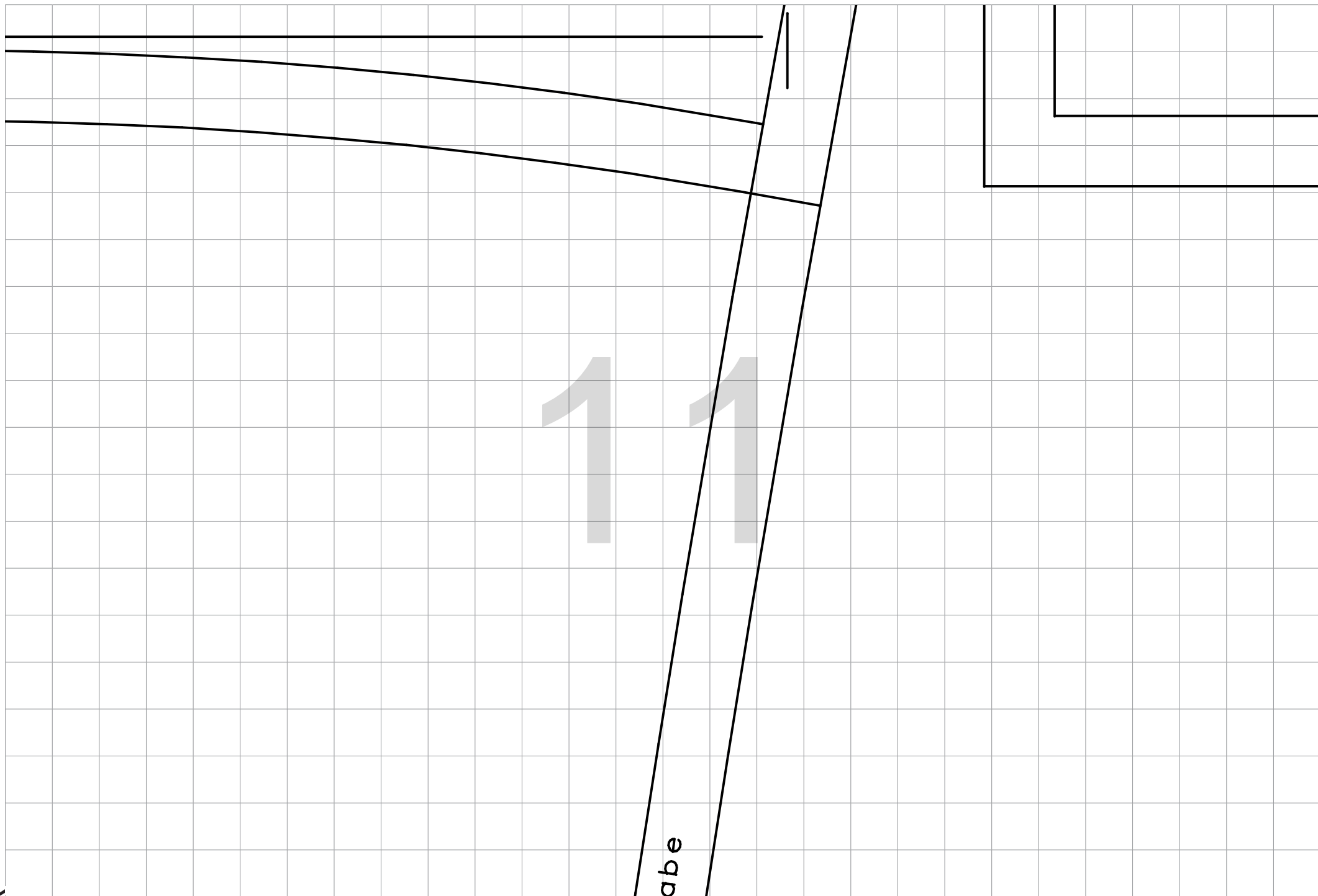
KLEID VICHY  
RT und VT unten  
Zuschnitt 2\*  
GR.S50



378.0 mm

Kurzarm

10



1.5cm Nahtzugabe

12

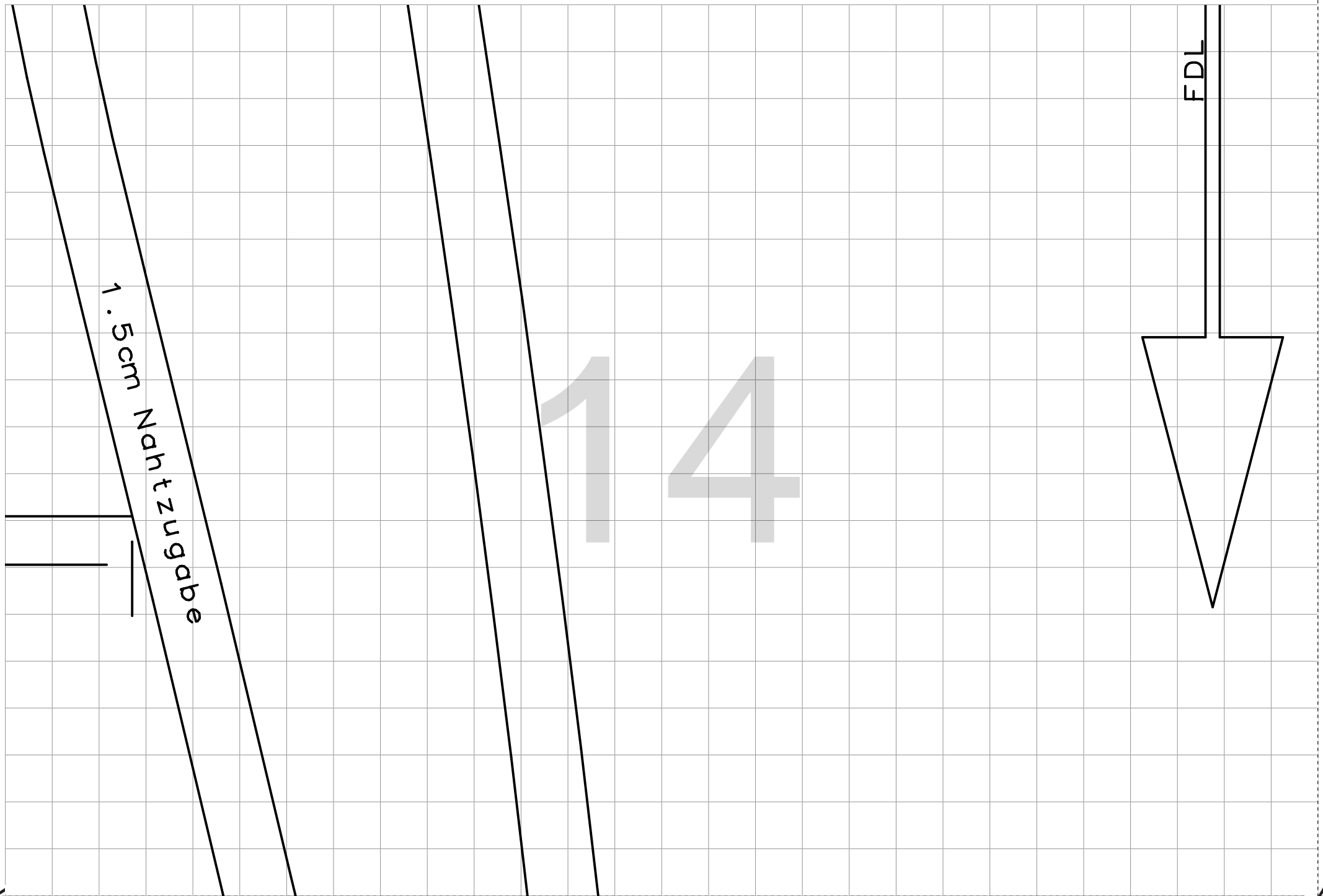
1,5cm Nahtzugabe

HM-Bruch

FDL

6-59  
ITTQUELLE.DE

Hufte  
284.2 mm



1.5cm Nahtzugabe

FDL

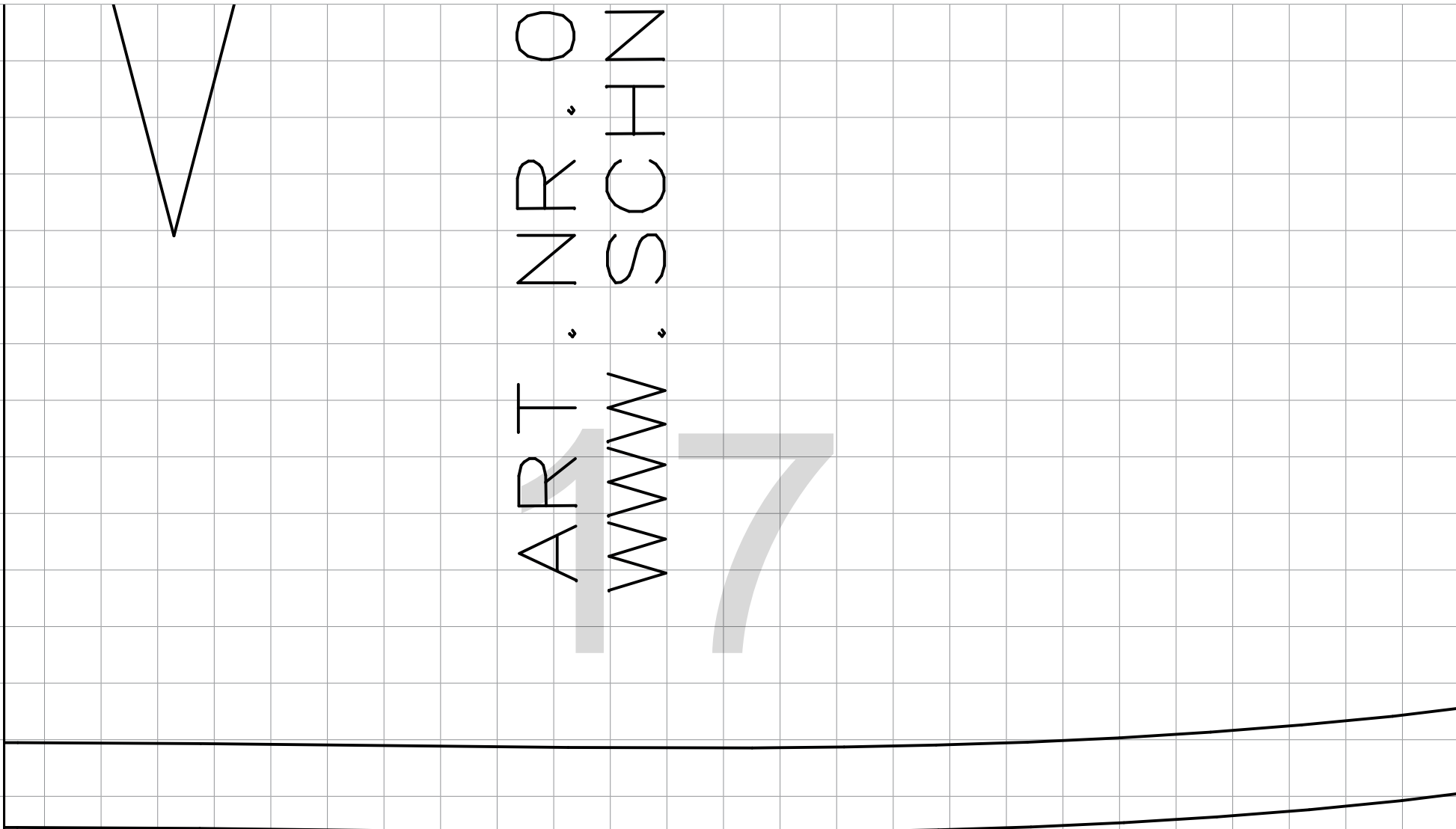
14



1.5cm Nahtzug

15

16





RT und V  
Zuschnitt  
GR.S50

VM und HM Bruch

FDL

T Volant  
t 2\*

20